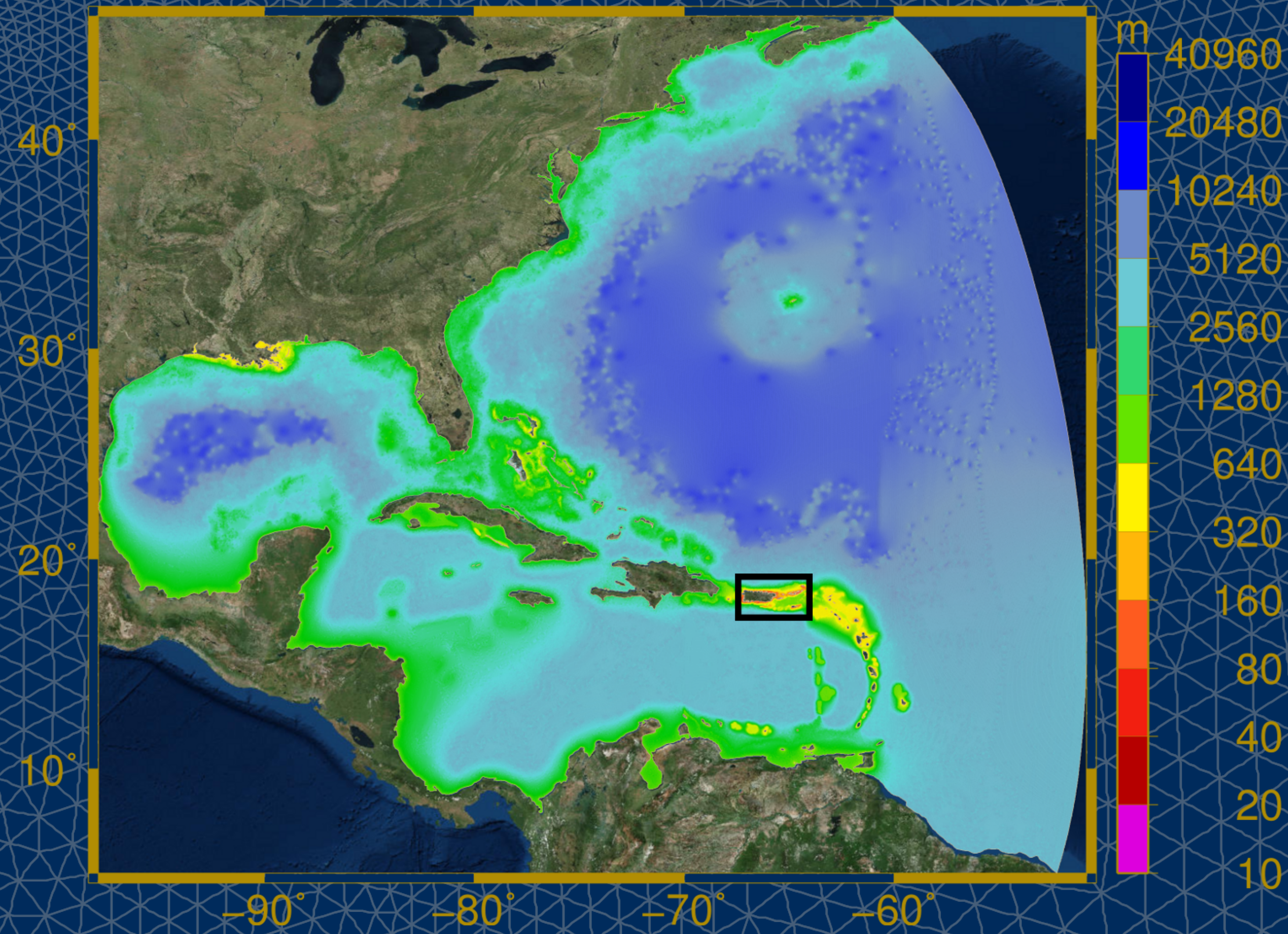
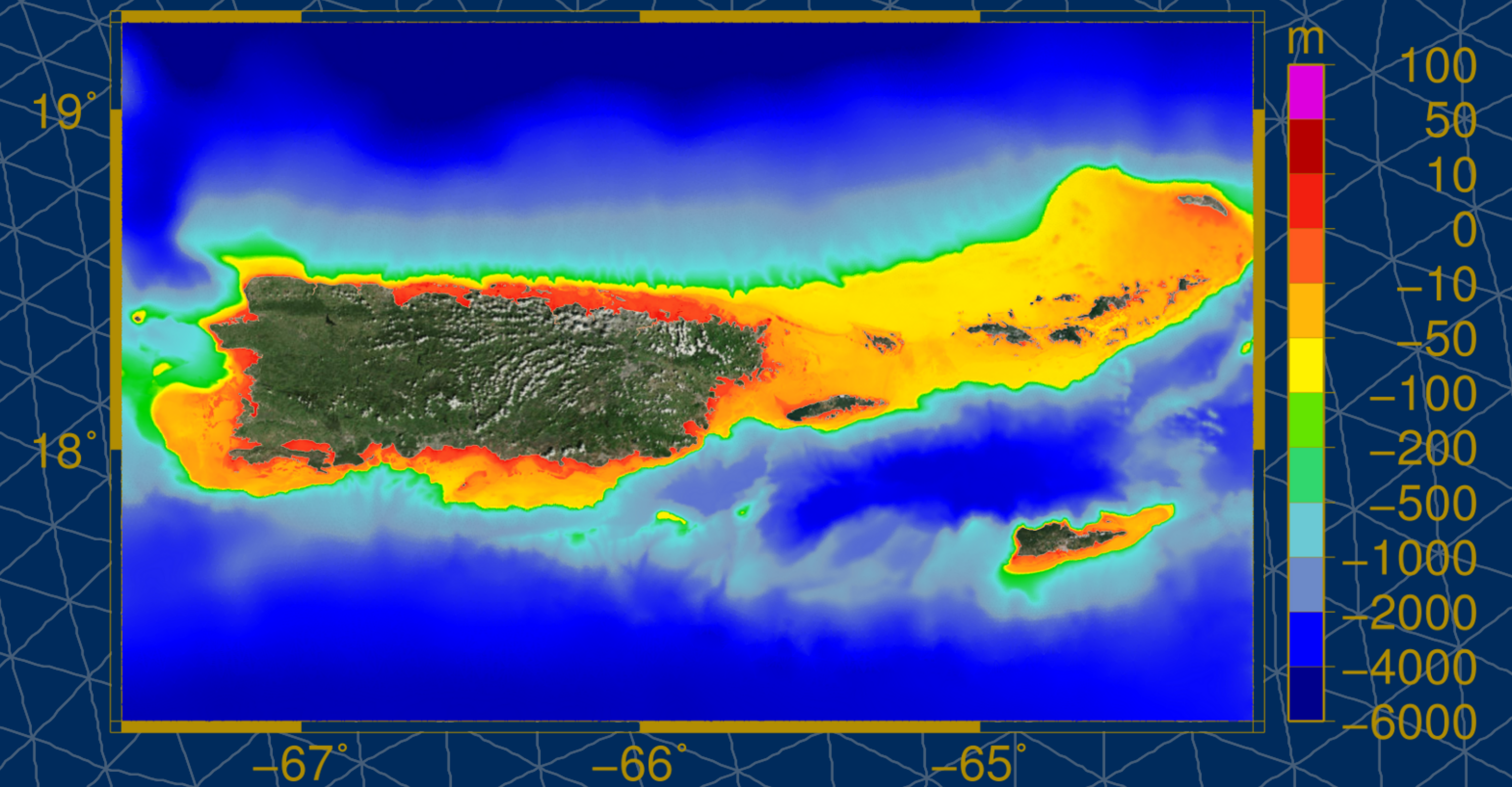
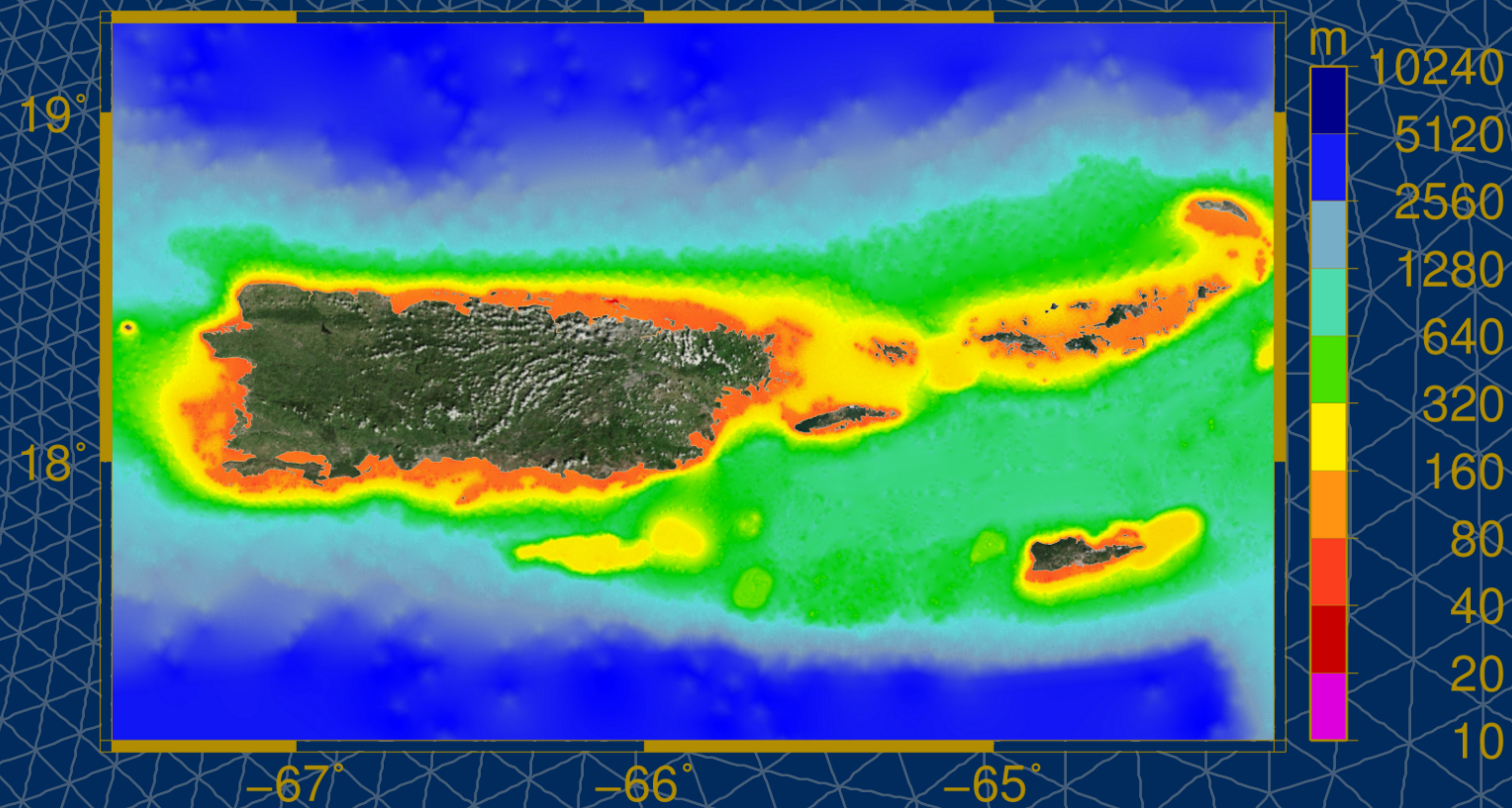
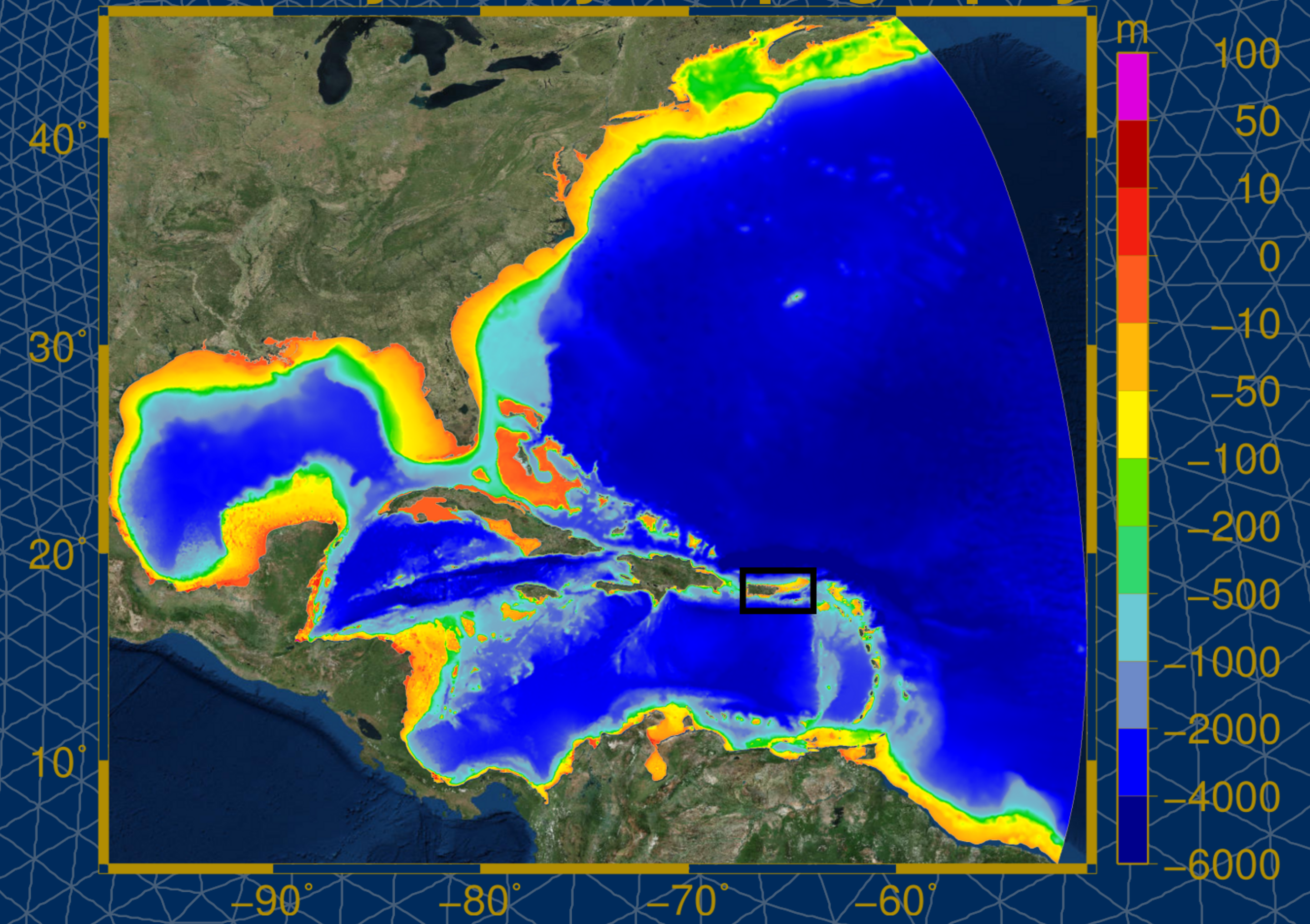


PRVI

Grid Size



Bathymetry / Topography



Number of Elements: 4,938,849
Number of Nodes: 2,504,067
Minimum Resolution: 11.3 m
Maximum Resolution: 15.7 km
Created: 2013

Detailed grid of Puerto Rico, the Virgin Islands and the Caribbean Sea for computing tides, riverine flows and hurricane storm surge coupled to wind waves through the integrated SWAN+ADCIRC model.