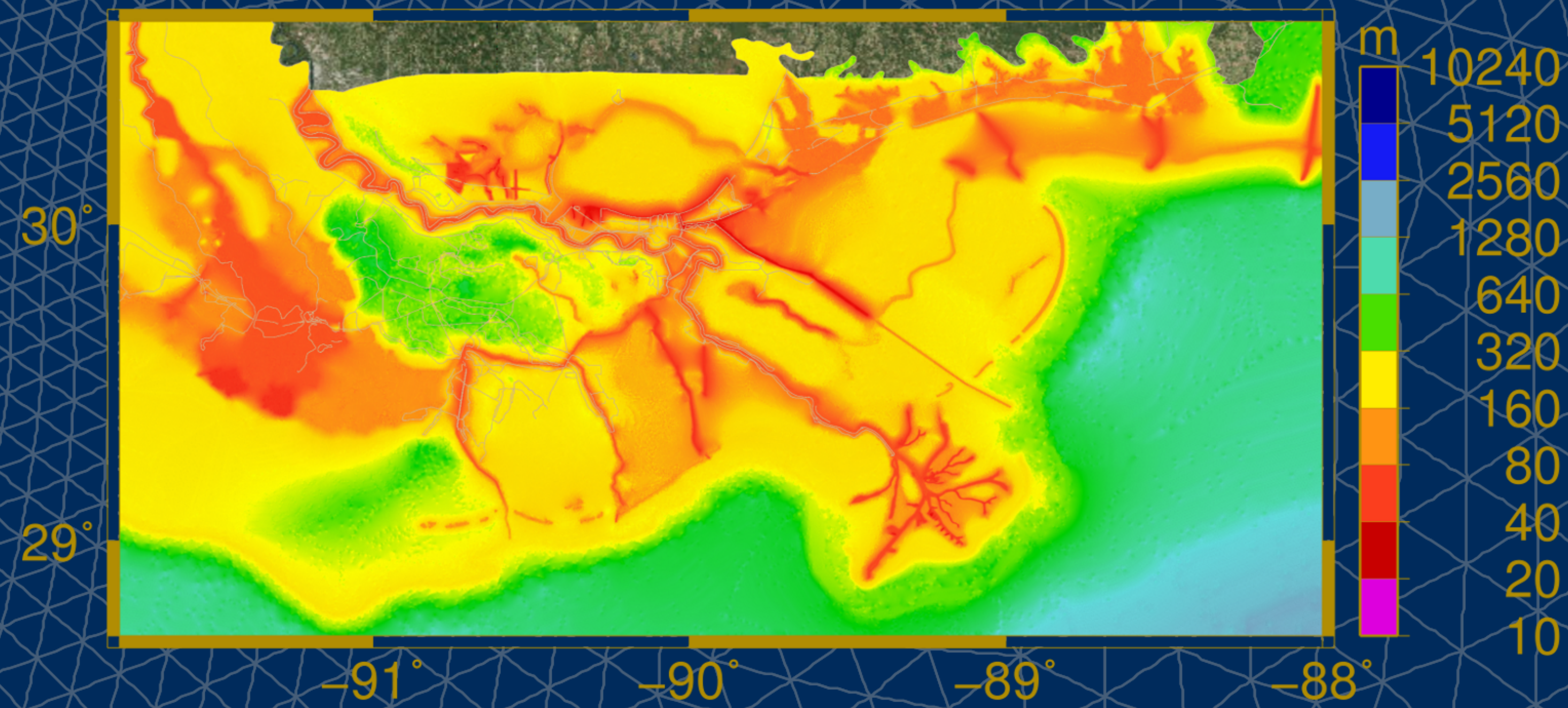
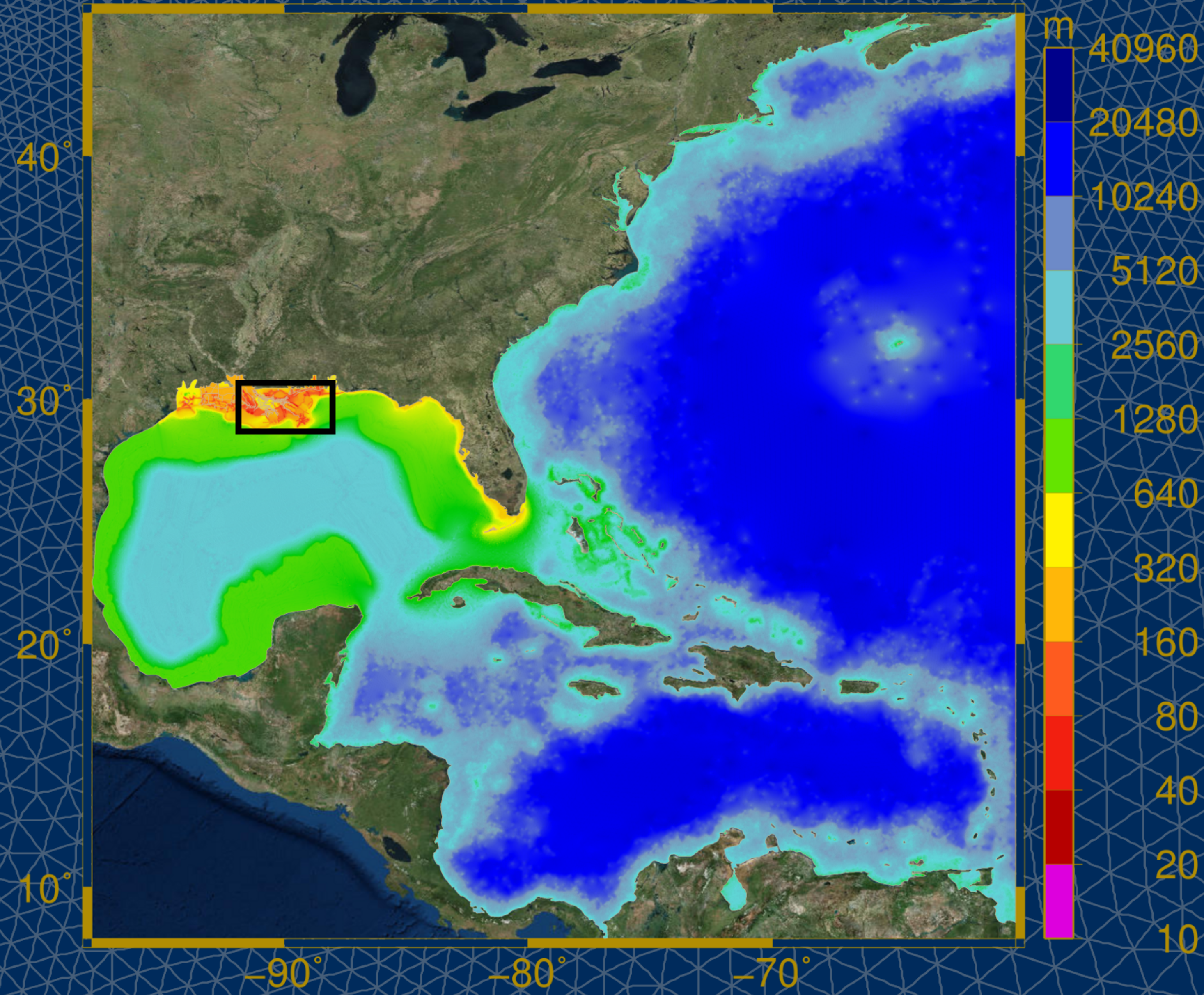
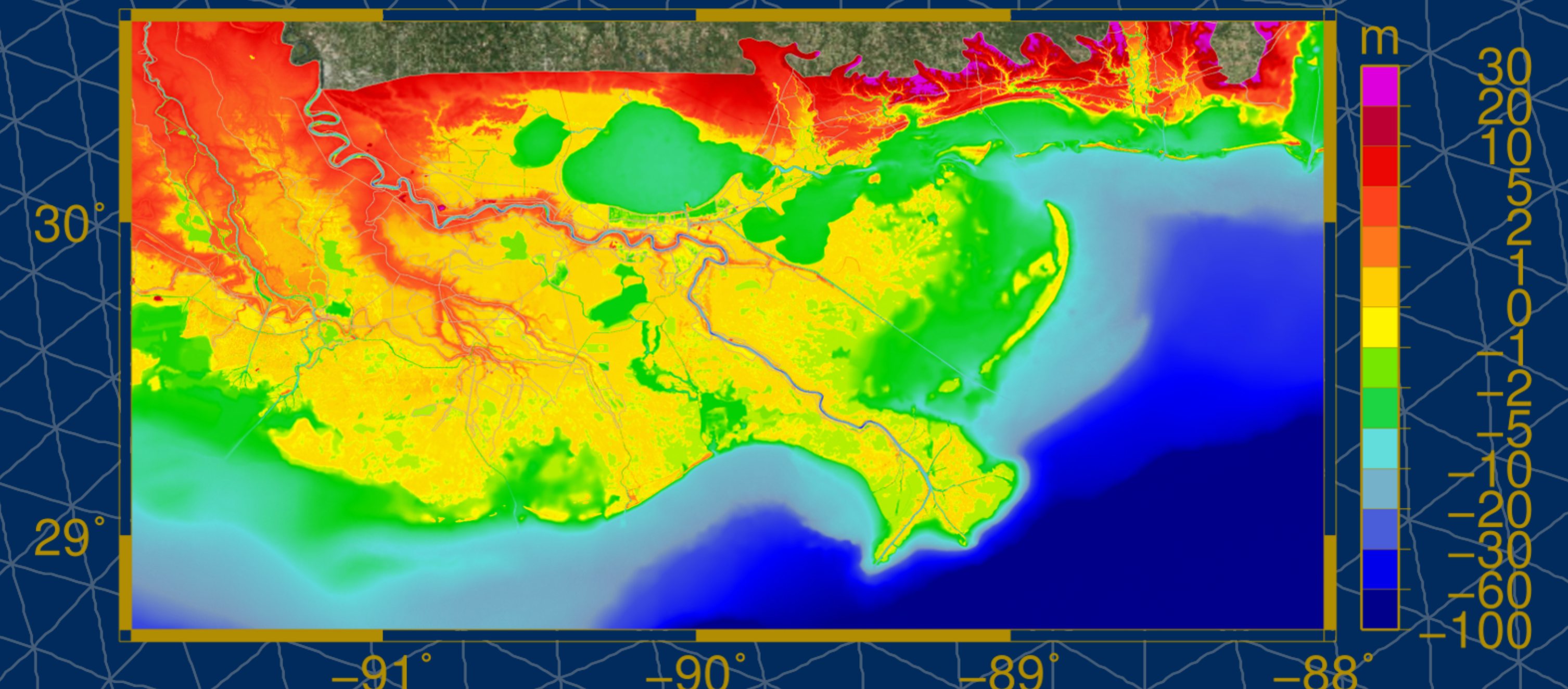
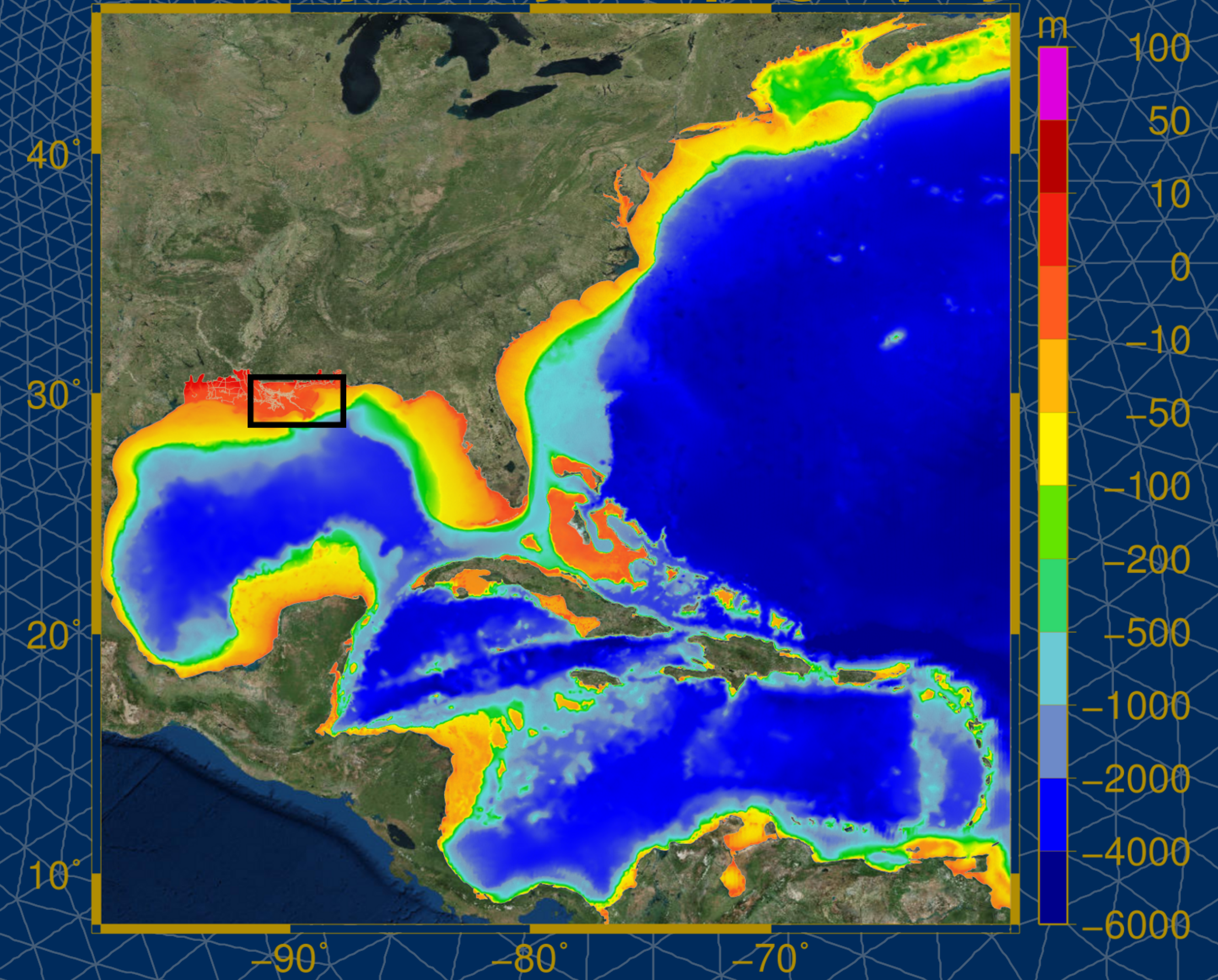


SL18

Grid Size



Bathymetry / Topography



Number of Elements: 13,554,652
Number of Nodes: 6,850,379
Minimum Resolution: 9.8 m
Maximum Resolution: 31.3 km
Created: 2011

Ultra high resolution grid of Southern Louisiana for computing tides, riverine flows and hurricane storm surge coupled to wind waves through the integrated SWAN+ADCIRC model.